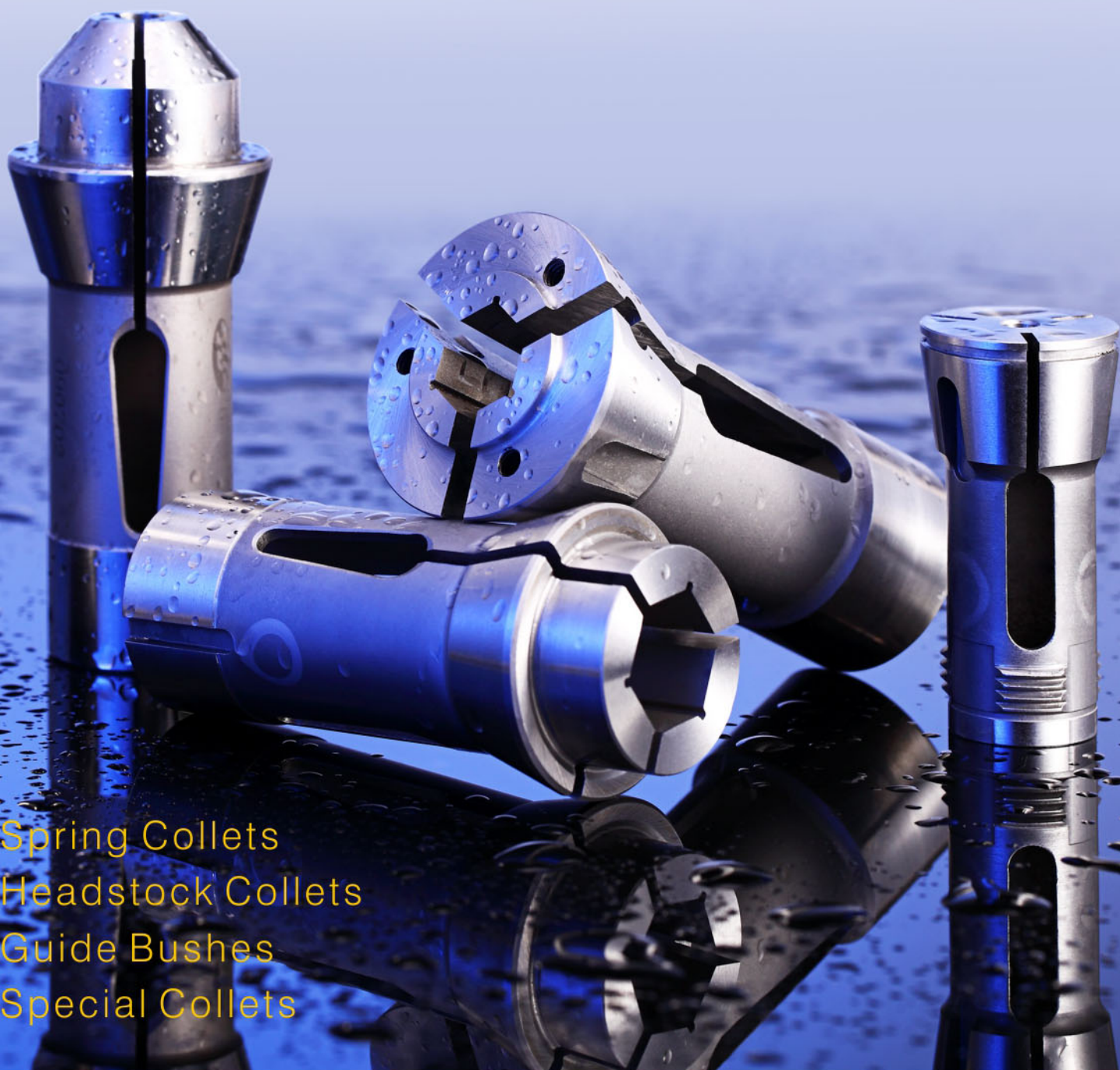




# Enituice

ENTERPRISE CO., LTD.

Honesty / Professional / Quality



Spring Collets  
Headstock Collets  
Guide Bushes  
Special Collets



**Enituice**  
ENTERPRISE CO., LTD.



Enituice is a professional and ISO 9001:2008 accredited manufacturer specializing in designing and producing all kinds of Steel Collets, Carbide Collets, and Guide Bushes. Our products are widely used as Work Holding Tools or CNC Auto Lathe Tools.

With over 30 years of engineering and manufacturing experience, we are committed to exceeding the expectations of our customers. Through dedicated teamwork, we ensure that we supply quality products and services to the complete satisfaction of our customers, by doing it right the first time and every time. We promise to strive for continual improvement. Our products have been exporting to countries such as United States, Canada, Turkey, Brazil, Vietnam, Thailand, Malaysia, Israel, Russia, Pakistan, Netherlands, Sweden, and Italy.

#### Our Product Advantages:

- Good durability and high precision
- Superior material
- Competitive prices
- Comprehensive product range
- Customized products are available
- On time delivery

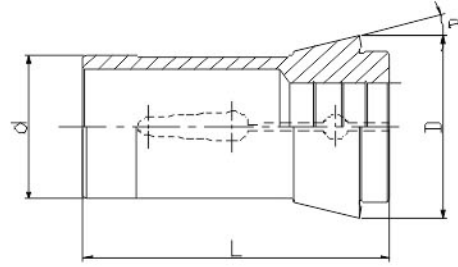
Honestly speaking, quality is not something to claim or to explain, it can only be experienced. We firmly believe that a trial order would build confidence between us and it will pave a way to mutually beneficial business.

If you are interested in further product information, please feel free to contact us. We are happy to negotiate with potential customers to meet specific requests whenever possible. We welcome your inquiries and hope to be of service in the future.



**Enituice**  
ENTERPRISE CO., LTD.

PUSH-TYPE COLLETS

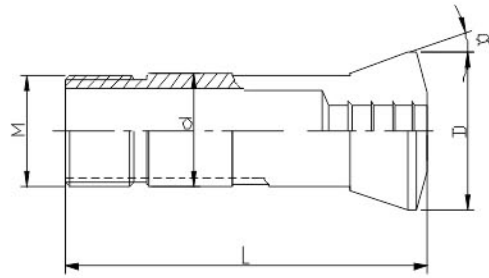


| Art-No  | Type            | Item No | d      | L   | D       | DIN No  | Schau No | NEU NO  |
|---------|-----------------|---------|--------|-----|---------|---------|----------|---------|
| 140E    | TRAUB A-15      | 1215    | ø 22.0 | 55  | ø 30.0  | 6343-22 | F22/71   |         |
| 148E    | TRAUB A-20      | 1220    | ø 28.0 | 70  | ø 38.0  |         | F28/93   | 231.004 |
| 161E    | TRAUB A-25      | 1225    | ø 32.0 | 75  | ø 45.0  | 6343-32 | F32/221  | 231.005 |
| 162E    | INDEX#25        | 1226    | ø 35.0 | 70  | ø 43.0  |         | F35/67   |         |
| 163E    | INDEX#30        | 1230    | ø 35.0 | 80  | ø 48.0  | 6343-35 | F35/94   |         |
| 164E    | #22 B&S LICO#32 | 1232    | ø 38.1 | 108 | ø 49.0  |         | F38/72   | 285.002 |
| 171E    | INDEX#36        | 1236    | ø 42.0 | 94  | ø 55.0  | 6343-42 | F42/99   | 231.007 |
| 173E    | INDEX#42        | 1242    | ø 48.0 | 94  | ø 60.0  | 6343-48 | F48/81   | 231.009 |
| 177E    | INDEX#52        | 1252    | ø 58.0 | 94  | ø 70.0  |         |          |         |
| 185E    | INDEX#60        | 1261    | ø 66.0 | 110 | ø 84.0  | 6343-60 | F66/359  | 231.001 |
| 193E    | INDEX#80        | 1280    | ø 90.0 | 130 | ø 107.0 | 6343-80 |          |         |
| POLYGYM | #38             | 1238    | ø 42.0 | 92  | ø 51.0  |         |          |         |
| LI CO   | TNS-30/42       | 1240    | ø 46.0 | 65  | ø 55.0  |         |          |         |
|         | #65             | 1265    | ø 72.0 | 142 | ø 90.25 |         |          |         |
| JINN FA | C-32            | 1332    | ø 40.0 | 104 | ø 54.5  |         |          |         |
|         | C-44            | 1342    | ø 54.0 | 87  | ø 68.0  |         |          |         |
|         | JCL-50          | 1350    | ø 60.0 | 89  | ø 72.0  |         |          |         |
|         | JCL-60          | 1360    | ø 75.0 | 100 | ø 93.0  |         |          |         |
|         | JCL-75          | 1375    | ø 85.0 | 110 | ø 98.0  |         |          |         |
| MIYANO  | BNC20           | 1720    | ø 27.0 | 73  | ø 38.0  |         |          |         |
|         | BNC34           | 1734    | ø 44.4 | 108 | ø 54.2  |         |          |         |
|         | #25             | 1725    | ø 40.0 | 95  | ø 45.0  |         |          |         |
| RIKEN   | SAD-25          | 1726    | ø 30.0 | 66  | ø 43.0  |         |          |         |
|         | SAD-40          | 1742    | ø 48.0 | 84  | ø 66.0  |         |          |         |
|         | SAD-50          | 1750    | ø 56.0 | 94  | ø 68.0  |         |          |         |
|         | SAD-65          | 1765    | ø 75.0 | 100 | ø 93.0  |         |          |         |



**Enituice**  
ENTERPRISE CO., LTD.

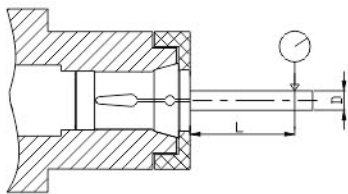
PULL-TYPE COLLETS



| Machines  | Type      | Steel   | Carbide | d       | L     | D      | Thread M  |
|-----------|-----------|---------|---------|---------|-------|--------|-----------|
|           |           | Item No | Item No |         |       |        |           |
| EGURO     | #6        | 1015    | 2015    | ø 19.0  | 76    | ø 26.0 | 18.5X1.2  |
|           | #8        | 1020    | 2020    | ø 25.0  | 102   | ø 33.0 | 24X1.5    |
|           | #10       | 1024    | 2024    | ø 32.0  | 118   | ø 42.0 | 32X1.5    |
| YUNGHO    | YB-25     | 1025    | 2025    | ø 32.0  | 104   | ø 39.0 | 31.5X20f" |
|           | YB-32     | 1032    | 2032    | ø 39.0  | 119   | ø 49.0 | 38X18f"   |
|           | YB-42     | 1042    | 2042    | ø 52.0  | 137   | ø 64.0 | 50X16f"   |
| FUJI      | #0825     | 1112    | 2112    | ø 16.0  | 72    | ø 24.0 | 15X0.85   |
|           | #1820     | 1120    | 2120    | ø 28.0  | 100   | ø 36.0 | 25X1.5    |
|           | #1825     | 1125    | 2125    | ø 35.0  | 124   | ø 49.0 | 33X1.5    |
|           | #1832     | 1132    | 2132    | ø 43.0  | 137   | ø 57.5 | 40X1.75   |
| DAIWA     | #10       | 1410    | 2410    | ø 15.0  | 60    | ø 21.0 | 15X1.0    |
|           | #102      | 1412    | 2412    | ø 17.0  | 69    | ø 24.0 | 17X1.0    |
|           | #15       | 1415    | 2415    | ø 22.0  | 85    | ø 28.0 | 21X1.0    |
| KITAMURA  | XKNC-15FA | 1515    | 2515    | ø 19.05 | 76    | ø 26.0 | 18.5X1.25 |
|           | XKNC-20FA | 1520    | 2520    | ø 26.0  | 92    | ø 34.0 | 25X1.25   |
| HARDINGE  | 5C        | 1705    | 2705    | ø 31.75 | 88    | ø 37.3 | 31.3X20f" |
|           | 16C       | 1716    | 2716    | ø 48.0  | 114.5 | ø 57.4 | 47.5X1.75 |
|           | 20C       | 1720    | 2720    | ø 60.4  | 163   | ø 73.2 | 60X1.5    |
|           | R8        | 1708    | 2708    | ø 24.1  | 105   | ø 32.4 | 19X1.5    |
| RIKEN     | PULL-25   | 1825    | 2825    | ø 36.0  | 88    | ø 44.0 | 32X1.5    |
|           | PULL-40   | 1840    | 2840    | ø 55.0  | 110   | ø 66.0 | 50X1.5    |
|           | PULL-60   | 1860    | 2860    | ø 83.0  | 132   | ø 97.0 | 78X2.0    |
| CITIZEN   | BL20/25   | 1820    | 2820    | ø 33.0  | 100   | ø 41.0 | 32X1.5    |
| TSUGAMI   | BM-16     | 1616    | 2616    | ø 30.0  | 75    | ø 38.0 | 25X1.5    |
| STAR      | SC-20     | 1920    | 2920    | ø 30.0  | 79    | ø 38.0 | 26X1.5    |
| KATAMAZ   | 850       | 8024    | 2024    | ø 37.0  | 101   | ø 46.5 | 32X1.5    |
| WACHIGAL  | WPL-17    | 1517    | 2517    | ø 23.0  | 97    | ø 32.0 | 22X1.5    |
| Wang Tzyy | #20       | 1320    | 2320    | ø 28.0  | 82    | ø 38.0 | 24X20f"   |

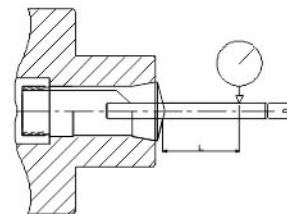
| Machines         | Type           | Item No | Item No | d        | L      | D        | Thread M     |
|------------------|----------------|---------|---------|----------|--------|----------|--------------|
| <b>SENDAY</b>    | SD-25          | 1525    | 2525    | ø 34.0   | 84     | ø 41.5   | 29X20f"      |
|                  | SD-32          | 1532    | 2532    | ø 42.0   | 95     | ø 49.0   | 38X20f"      |
|                  | SD-34          | 1534    | 2534    | ø 42.0   | 95.5   | ø 51.0   | 36X1.5       |
|                  | SD-45          | 1545    | 2545    | ø 56.0   | 120    | ø 68.0   | 51X20f"      |
|                  | SD-52          | 1552    | 2552    | ø 61.0   | 120    | ø 68.0   | 56X20f"      |
| <b>SCHAUBLIN</b> | W-12 80/00002  | 1612    |         | ø 12.0   | 46     | ø 16     | S 11.75X1.25 |
|                  | W-12 80/93108  | 1611    |         | ø 12.0   | 52     | ø 16     | S 11.75X1.25 |
|                  | W-20 80/00004  | 1620    |         | ø 20.0   | 73     | ø 26.3   | S 19.7X1.666 |
|                  | W-25 80/00005  | 1625    |         | ø 25.0   | 97.6   | ø 33.7   | S 24.7X15f"  |
|                  | HW-25 80/02010 | 1626    |         | ø 25.0   | 97.6   | ø 33.7   | S 24.7X15f"  |
|                  | HB-32 72/02010 | 1632    |         | ø 32.0   | 106    | ø 40.0   | S 29.7X15f"  |
|                  | L-20 77/00122  | 1613    |         | ø 20.0   | 122    | ø 28.0   | S 19.7X2.0   |
|                  | B6 72/00128    | 1606    |         | ø 6.0    | 31.3   | ø 10.5   | 5X36f"       |
|                  | B8 72/00137    | 1608    |         | ø 8.0    | 35.5   | ø 13.0   | 6.82x0.625   |
|                  | B46 72/02007   | 1246    |         | ø 46.0   | 120    | ø 60.3   | 40X1.5L      |
| <b>NANN</b>      | 359E (K23)     | 1923    |         | ø 23.0   | 94     | ø 32.0   | Tr23X1.5     |
|                  | 386E (K32)     | 1932    |         | ø 32.0   | 114    | ø 45.0   | Tr32X1.5     |
|                  | 389E (K45)     | 1945    |         | ø 45.0   | 145    | ø 60.0   | Tr45x2.0     |
|                  | 9049E          | 1246    |         | ø 46.0   | 120    | ø 60.3   | 40X1.5L      |
|                  | 9070E          | 1940    |         | ø 53.0   | 136    | ø 69.3   | 47X1.5L      |
|                  | 3640E(2)       | 1626    |         | ø 25.0   | 97.6   | ø 33.7   | S 24.7X15f"  |
|                  | 3714E          | 1632    |         | ø 32.0   | 106    | ø 40.0   | S 29.7X15f"  |
|                  | 3718E          | 1718    |         | ø 32.0   | 124    | ø 45.0   | Tr32X1.5     |
| <b>DAVENPORT</b> | Burring        | 1920    |         | ø 1.060" | 4.375" | ø 1.190" | 1.048"X16LH  |
|                  | Serro B        | 1925    |         | ø 1.218" | 4.38"  | ø 1.5"   | 1.143"X16RH  |
| <b>DMG</b>       | GM16-6         | 8816    |         | ø 30.0   | 80.5   | ø 39.0   | Bayonet      |
|                  | GM16-6 SUB     | 8817    |         | ø 18.7   | 51.5   | ø 25.0   | Bayonet      |
|                  | GMC20          | 8820    |         | ø 34.0   | 90     | ø 42.0   | Bayonet      |
|                  | GMC20 SUB      | 8821    |         | ø 28.0   | 73     | ø 32.0   | Bayonet      |

THIS IS SIMILAR TO DIN 6343



PUSH-TYPE COLLETS

THIS IS SIMILAR TO DIN 6341



PULL-TYPE COLLETS

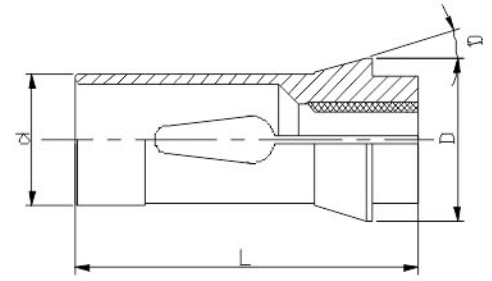
| clamping diameter |       | testing point | running concentricity |                |
|-------------------|-------|---------------|-----------------------|----------------|
| over              | up to |               | standard              | high precision |
| 1                 | 1.6   | 6             | 0.02                  | 0.01           |
| 1.6               | 3     | 10            | 0.02                  | 0.01           |
| 3                 | 6     | 16            | 0.02                  | 0.01           |
| 6                 | 10    | 25            | 0.02                  | 0.01           |
| 10                | 18    | 40            | 0.03                  | 0.15           |
| 18                | 24    | 50            | 0.04                  | 0.02           |
| 24                | 30    | 60            | 0.04                  | 0.02           |
| 30                | --    | 60            | 0.05                  | 0.025          |

| clamping diameter |       | testing point | running concentricity |                |
|-------------------|-------|---------------|-----------------------|----------------|
| over              | up to |               | standard              | high precision |
| 0.5               | 1     | 3             | 0.02                  | 0.01           |
| 1                 | 1.6   | 6             | 0.02                  | 0.01           |
| 1.6               | 3     | 10            | 0.02                  | 0.01           |
| 3                 | 6     | 16            | 0.02                  | 0.01           |
| 6                 | 10    | 25            | 0.02                  | 0.01           |
| 10                | 18    | 40            | 0.03                  | 0.15           |
| 18                | 24    | 50            | 0.04                  | 0.02           |
| 24                | 30    | 60            | 0.04                  | 0.02           |
| 30                | --    | 60            | 0.05                  | 0.025          |



**Enituisse**  
ENTERPRISE CO., LTD.

HEADSTOCK COLLETS FOR LATHES



| Machines  | Type                         |                  |                    | d      | L      | D      | Article No |       |         |         |         |
|-----------|------------------------------|------------------|--------------------|--------|--------|--------|------------|-------|---------|---------|---------|
|           |                              | Steel<br>Item No | Carbide<br>Item No |        |        |        |            |       |         |         |         |
| CITIZEN   | R04                          | 6204             | 3204               | ø 8.0  | 36     | ø 11.5 |            |       |         |         |         |
|           | R07,D/F/G/L-10               | 6910             | 3910               | ø 15.0 | 64     | ø 21.0 | F15/580    | 120E  | TF15    | 40.003  |         |
|           | B12, F12                     | 6212             | 3212               | ø 16.0 | 64     | ø 21.0 |            |       |         |         |         |
|           | D/E/F/L/M-16,E/F/L/M-20      | 6720             | 3720               | ø 25.0 | 77     | ø 35.0 |            |       |         |         |         |
|           | L16/20,F16/20,G20,E20,A20    | 6216             | 3216               | ø 26.0 | 67     | ø 36.0 |            |       |         |         | 511.001 |
|           | F25, L25, E25, E25J          | 6225             | 3225               | ø 30.0 | 78     | ø 42.0 |            |       |         |         |         |
|           | L32,M32,E32,G32              | 6232             | 3232               | ø 37.0 | 92     | ø 47.0 |            |       |         |         |         |
| STAR      | JNC8                         | 6508             | 3508               | ø 12.0 | 51     | ø 20.0 |            |       |         |         |         |
|           | SW 7,SW 10,JNC10,RNC10,SNC10 | 6910             | 3910               | ø 15.0 | 64     | ø 21.0 | F15/580    | 120E  | TF15    | 40.003  |         |
|           | SE12, S13, VNC12, SJ15       | 6512             | 3512               | ø 18.0 | 64     | ø 25.0 |            |       |         |         |         |
|           | SB16                         | 6616             | 3616               | ø 20.0 | 67     | ø 26.0 |            |       |         |         |         |
|           | RNC16, SE16, SR16, SH16      | 6516             | 3516               | ø 20.0 | 67     | ø 28.0 | F20/87     | 138E  | TF20    | 40.004  |         |
|           | JNC16, VNC20                 | 6520             | 3520               | ø 24.0 | 65.5   | ø 32.0 |            |       |         |         |         |
|           | KNC16/20,SR20,VNC20          | 6720             | 3720               | ø 25.0 | 77     | ø 35.0 |            |       |         |         |         |
|           | JNC16,ZNC16,VNC20,J20        | 6216             | 3216               | ø 26.0 | 67     | ø 36.0 |            |       |         |         |         |
|           | KJR25,SCN25                  | 6725             | 3725               | ø 30.0 | 80     | ø 42.0 | F30/63     | 157E  | TF30    | 40.006  |         |
|           | JNC32/25, VNC32,MR32         | 6932             | 3932               | ø 37.0 | 92     | ø 47.0 | F37/740    | 1536E | TF37    | 40.008  |         |
|           | STM38                        | 1242             | 2242               | ø 48.0 | 94     | ø 60.0 | F48/81     | 173E  | TF48    | 231.009 |         |
| TSUGAMI   | T7, BOO7, BM07,NP-4W         | 6707             | 3707               | ø 10.0 | 46     | ø 16.0 | F10/1178   | 111E  |         | 140.001 |         |
|           | L10                          | 6710             | 3710               | ø 14.0 | 47     | ø 20.0 |            |       |         |         |         |
|           | NT/NP11                      | 6910             | 3910               | ø 15.0 | 64     | ø 21.0 | F15/580    | 120E  | TF15    | 40.003  |         |
|           | BO12,NT/NP-12                | 6616             | 3616               | ø 20.0 | 67     | ø 26.0 |            |       |         |         |         |
|           | NP17, NP16, NT17             | 6717             | 3717               | ø 23.8 | 62     | ø 28.0 |            |       |         | S16-HMS |         |
|           | BO18A,S20,BO205A             | 6721             | 3721               | ø 28.0 | 77     | ø 35.0 |            |       |         | S20-HM  |         |
|           | BO18B,S20,BO205B             | 6720             | 3720               | ø 25.0 | 77     | ø 35.0 |            |       |         |         |         |
|           | BS26A, BS25                  | 6726             | 3726               | ø 33.0 | 80     | ø 40.0 |            |       |         | S25-HM  |         |
|           | BS26B, BS25                  | 6725             | 3725               | ø 30.0 | 80     | ø 42.0 | F30/63     | 157E  | TF30    | 40.006  |         |
|           | NT/NP-32                     | 6232             | 3232               | ø 37.0 | 92     | ø 47.0 |            |       |         |         |         |
|           | BH38                         | 6738             | 3738               | ø 43.0 | 92     | ø 53.0 | F43        |       | TF43    | 511.024 |         |
| BH38(SUB) | 6739                         | 3739             | ø 48.0             | 100    | ø 54.0 | F48    |            | BS38  | 511.028 |         |         |
| NOMURA    | NSP8410, NSP8420             | 6608             | 3608               | ø 12.0 | 58     | ø 18.0 |            |       |         |         |         |
|           | NSP1053, NN10K               | 6610             | 3610               | ø 16.0 | 50.5   | ø 22.0 |            |       |         |         | 90.015  |
|           | NSP1653, NSP1253             | 6616             | 3616               | ø 20.0 | 68     | ø 26.0 |            |       |         |         |         |
|           | NN20KF                       | 6216             | 3216               | ø 26.0 | 67     | ø 36.0 |            |       |         |         | 511.001 |
|           | P-23                         | 6623             | 3623               | ø 29.0 | 72     | ø 39.0 |            |       |         |         |         |
|           | NNCP2553, NN25K              | 6625             | 3625               | ø 32.0 | 84.5   | ø 42.0 |            |       |         |         |         |
|           | P-32                         | 6632             | 3632               | ø 42.0 | 86     | ø 52.0 |            |       |         |         |         |

| Machines    | Type                      | Steel   | Carbide | d      | L    | D      | Article No |       |         |         |
|-------------|---------------------------|---------|---------|--------|------|--------|------------|-------|---------|---------|
|             |                           | Item No | Item No |        |      |        |            |       |         |         |
| TORNOS      | M4,T4,TV                  | 6904    | 3904    | ø 8.0  | 42   | ø 12.0 | F8/577     | 101E  | TF8     | 40.001  |
|             | M7                        | 6907    | 3907    | ø 10.0 | 47.5 | ø 15.5 | F10/86     | 109E  | TF10    | 40.002  |
|             | MS7                       | 6108    | 3108    | ø 13.0 | 64   | ø 19.0 | F13/357    | 116E  | TF13    | 40.016  |
|             | R10,M10                   | 6910    | 3910    | ø 15.0 | 64   | ø 21.0 | F15/580    | 120E  | TF15    | 40.003  |
|             | R125                      | 6912    | 3912    | ø 16.0 | 64   | ø 21.0 | F16/1076   | 1212E | TF16    | 40.012  |
|             | R16,M15                   | 6516    | 3516    | ø 20.0 | 67   | ø 28.0 | F20/87     | 138E  | TF20    | 40.004  |
|             | RR20,R20,M20              | 6920    | 3920    | ø 25.0 | 77   | ø 35.0 | F25/64     | 145E  | TF25    | 40.005  |
|             | M25                       | 6725    | 3725    | ø 30.0 | 80   | ø 42.0 | F30/63     | 157E  | TF30    | 40.006  |
|             | MR32,TBM32                | 6932    | 3932    | ø 37.0 | 92   | ø 47.0 | F37/740    | 1536E | TF37    | 40.008  |
| TORNOS-DECO | MR32,TBM32                | 6907    | 3907    | ø 10.0 | 47.5 | ø 15.5 | F10/86     | 109E  | TF10    | 40.002  |
|             | DECO 10                   | 6910    | 3910    | ø 15.0 | 64   | ø 21.0 | F15/580    | 120E  | TF15    | 40.003  |
|             | DECO 13                   | 6912    | 3912    | ø 16.0 | 64   | ø 21.0 | F16/1076   | 1212E | TF16    | 40.012  |
|             | DECO 13/16                | 6816    | 3816    | ø 20.0 | 54   | ø 26.0 | F20/201    | 136E  | F20-201 | 225.003 |
|             | DECO 20, DELTA 12/20      | 6920    | 3920    | ø 25.0 | 77   | ø 35.0 | F25/64     | 145E  | TF25    | 40.005  |
|             | DECO 26, SIGMA 20         | 6826    | 3826    | ø 30.0 | 65   | ø 38.0 | F30/101    | 1446E | O161    | 90.009  |
|             | DECO 32                   | 6932    | 3932    | ø 37.0 | 92   | ø 47.0 | F37/740    | 1536E | TF37    | 40.008  |
|             | DELTA 38/5                | 6738    | 3738    | ø 43.0 | 92   | ø 53.0 | F43        |       | TF43    | 511.024 |
|             | DELTA 38/5 (SUB)          | 6739    | 3739    | ø 48.0 | 100  | ø 54.0 | F48        |       | BS38    | 511.028 |
| BECHLER ENC | ENC 74/75                 | 6108    | 3108    | ø 13.0 | 64   | ø 19.0 | F13/357    | 116E  | TF13    | 40.016  |
|             | ENC 162/164               | 6816    | 3816    | ø 20.0 | 54   | ø 26.0 | F20/201    | 136E  | F20-201 | 225.003 |
|             | ENC 163/167               | 6920    | 3920    | ø 25.0 | 77   | ø 35.0 | F25/64     | 145E  | TF25    | 40.005  |
| BECHLER     | A4, A7                    | 6107    | 3107    | ø 10.0 | 46   | ø 16.0 |            |       |         |         |
|             | A7, A10, AR10             | 6110    | 3110    | ø 14.0 | 46   | ø 18.0 | F14/98     | 117E  |         | 140.002 |
|             | B12                       | 6112    | 3112    | ø 18.0 | 67   | ø 25.0 | F18/85     | 127E  |         | 140.003 |
|             | B16                       | 6116    | 3116    | ø 22.0 | 67   | ø 28.0 | F22/88     | 139E  |         | 140.004 |
|             | B20,BR20                  | 6120    | 3120    | ø 26.0 | 67   | ø 32.0 | F26/90     | 146E  |         | 140.005 |
| STROHM      | M75-M105                  | 6907    | 3907    | ø 10.0 | 47.5 | ø 15.5 | F10/86     | 109E  | TF10    | 40.002  |
|             | M105/125                  | 6910    | 3910    | ø 15.0 | 64   | ø 21.0 | F15/580    | 120E  | TF15    | 40.003  |
|             | M205/255                  | 6920    | 3920    | ø 25.0 | 77   | ø 35.0 | F25/64     | 145E  | TF25    | 40.005  |
|             | M205/255                  | 6725    | 3725    | ø 30.0 | 80   | ø 42.0 | F30/63     | 157E  | TF30    | 40.006  |
| TRAUB       | TNL 7                     | 6907    | 3907    | ø 10.0 | 47.5 | ø 15.5 | F10/86     | 109E  | TF10    | 40.002  |
|             | TNL 12/7                  | 6910    | 3910    | ø 15.0 | 64   | ø 21.0 | F15/580    | 120E  | TF15    | 40.003  |
|             | TNL 12/7                  | 6912    | 3912    | ø 16.0 | 64   | ø 21.0 | F16/1076   | 1212E | TF16    | 40.012  |
|             | TNL 16                    | 6816    | 3816    | ø 20.0 | 54   | ø 26.0 | F20/201    | 136E  | F20-201 | 225.003 |
|             | TNL 16                    | 6516    | 3516    | ø 20.0 | 67   | ø 28.0 | F20/87     | 138E  | TF20    | 40.004  |
|             | TNL 20                    | 6920    | 3920    | ø 25.0 | 77   | ø 35.0 | F25/64     | 145E  | TF25    | 40.005  |
| WANG TZYU   | SL-1693                   | 6616    | 3616    | ø 20.0 | 68   | ø 26.0 |            |       |         |         |
|             | SL-2596                   | 6225    | 3225    | ø 30.0 | 78   | ø 42.0 |            |       |         |         |
|             | SL-3295                   | 6232    | 3232    | ø 37.0 | 92   | ø 47.0 |            |       |         |         |
| POLYGYM     | DIAMOND 12,12CS           | 6212    | 3212    | ø 16.0 | 64   | ø 21.0 |            |       |         |         |
|             | DIAMOND 16,16CS           | 6616    | 3616    | ø 20.0 | 68   | ø 26.0 |            |       |         |         |
|             | DIAMOND 16,16CS           | 6216    | 3216    | ø 26.0 | 67   | ø 36.0 |            |       |         | 511.001 |
|             | DIAMOND 25,25B,25CS,25CSB | 6225    | 3225    | ø 30.0 | 78   | ø 42.0 |            |       |         |         |
|             | DIAMOND 32,32B,32CS,32CSB | 6232    | 3232    | ø 37.0 | 92   | ø 47.0 |            |       |         |         |
|             | DIAMOND 32,32B,32CS,32CSB | 1242    | 2242    | ø 48.0 | 94   | ø 60.0 | F48/81     | 173E  | TF48    | 231.009 |

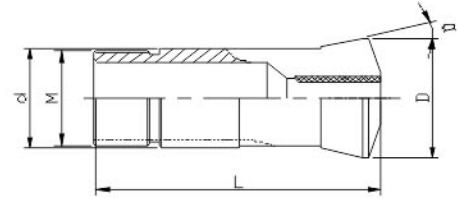
| Machines     | Type                       | Steel   | Carbide | d      | L    | D      | Article No |       |         |         |
|--------------|----------------------------|---------|---------|--------|------|--------|------------|-------|---------|---------|
|              |                            | Item No | Item No |        |      |        |            |       |         |         |
| JINN FA      | JSL-20                     | 6721    | 3721    | ø 28.0 | 77   | ø 35.0 |            |       |         |         |
|              | JSL-26                     | 6726    | 3726    | ø 33.0 | 80   | ø 40.0 |            |       |         |         |
|              | JSL-32                     | 6232    | 3232    | ø 37.0 | 92   | ø 47.0 |            |       |         |         |
|              | JSL-42AB                   | 1342    | 2342    | ø 54.0 | 87   | ø 68.0 |            |       |         |         |
| HANWHA       | HANEX11, SL12              | 6912    | 3912    | ø 16.0 | 64   | ø 22.0 | F16/1076   | 1212E | TF16    | 40.012  |
|              | HANEX17, ML18-G, SL16      | 1215    | 2215    | ø 22.0 | 55   | ø 30.0 | F22/71     | 140E  |         | 231.002 |
|              | HANEX20                    | 6920    | 3920    | ø 25.0 | 77   | ø 35.0 | F25/64     | 145E  | TF25    | 40.005  |
|              | HANEX25                    | 6425    | 3425    | ø 32.0 | 79   | ø 45.0 |            |       |         |         |
|              | SL-32                      | 6932    | 3932    | ø 37.0 | 92   | ø 47.0 | F37/740    | 1536E | TF37    | 40.008  |
|              | SL-35                      | 6435    | 3435    | ø 40.0 | 92   | ø 49.0 |            |       |         |         |
|              | SL-35HP-II,SUB             | 6436    | 3436    | ø 40.0 | 92   | ø 50.0 |            |       |         |         |
| NEXTURN      | SA-12                      | 6912    | 3912    | ø 16.0 | 64   | ø 22.0 | F16/1076   | 1212E | TF16    | 40.012  |
|              | SA-18,SA-20,SA-20e         | 6920    | 3920    | ø 25.0 | 77   | ø 35.0 | F25/64     | 145E  | TF25    | 40.005  |
|              | SA-26,SA-26e               | 1225    | 2225    | ø 32.0 | 75   | ø 45.0 | F32/221    | 161E  |         | 231.005 |
|              | SA-32                      | 6932    | 3932    | ø 37.0 | 92   | ø 47.0 | F37/740    | 1536E | TF37    | 40.008  |
| GAUTHIER     | GM 12                      | 6816    | 3816    | ø 20.0 | 54   | ø 26.0 | F20/201    | 136E  | F20-201 | 225.003 |
|              | GM 20                      | 6920    | 3920    | ø 25.0 | 77   | ø 35.0 | F25/64     | 145E  | TF25    | 40.005  |
|              | GM 25                      | 6725    | 3725    | ø 30.0 | 80   | ø 42.0 | F30/63     | 157E  | TF30    | 40.006  |
| GILDEMEISTER | GLD 12                     | 6516    | 3516    | ø 20.0 | 67   | ø 28.0 | F20/87     | 138E  | TF20    | 40.004  |
|              | GLD 16/20,GS20-L           | 6920    | 3920    | ø 25.0 | 77   | ø 35.0 | F25/64     | 145E  | TF25    | 40.005  |
|              | GLD 25L,GS25-L             | 1225    | 2225    | ø 32.0 | 75   | ø 45.0 | F32/221    | 161E  |         | 231.005 |
|              | SPEED 32-10                | 6932    | 3932    | ø 37.0 | 92   | ø 47.0 | F37/740    | 1536E | TF37    | 40.008  |
|              | SPRINT 42                  | 1242    | 2242    | ø 48.0 | 94   | ø 60.0 | F48/81     | 173E  | TF48    | 231.009 |
| PETERMANN    | P4,P7                      | 6004    | 3004    | ø 8.0  | 41   | ø 12.0 | F8/1079    |       |         | 90.002  |
|              | P7                         | 6907    | 3907    | ø 10.0 | 47.5 | ø 15.5 | F10/86     | 109E  | TF10    | 40.002  |
|              | P7R                        | 6010    | 3010    | ø 15.0 | 47   | ø 22.0 | F15/358    | 121E  |         | 90.004  |
|              | P10,10HSR                  | 6011    | 3011    | ø 16.0 | 55   | ø 22.0 | F16/104    | 123E  |         | 90.005  |
|              | P16                        | 6016    | 3016    | ø 22.0 | 66   | ø 32.0 | F22/727    |       |         | 90.007  |
| MANURHIN     | Swing 13,Traminer 13       | 6112    | 3112    | ø 18.0 | 67   | ø 25.0 | F18/85     | 127E  |         | 140.003 |
|              | Twin 13,Decotum 16         | 6516    | 3516    | ø 20.0 | 67   | ø 28.0 | F20/87     | 138E  | TF20    | 40.004  |
|              | Traminer 16                | 6816    | 3816    | ø 20.0 | 54   | ø 26.0 | F20/201    | 136E  | F20-201 | 225.003 |
|              | KMX,Swing,Traminer,Twin 20 | 6920    | 3920    | ø 25.0 | 77   | ø 35.0 | F25/64     | 145E  | TF25    | 40.005  |
|              | KMX 26,Twin 20,Swing 20    | 1225    | 2225    | ø 32.0 | 75   | ø 45.0 | F32/221    | 161E  |         | 231.005 |
|              | Mirabel PM 32              | 1232    | 2232    | ø 38.1 | 108  | ø 49.0 | F38/72     | 164E  |         | 285.002 |
| MAIER        | ML7                        | 6907    | 3907    | ø 10.0 | 47.5 | ø 15.5 | F10/86     | 109E  | TF10    | 40.002  |
|              | ML12G,ML12S,ML125K II      | 6910    | 3910    | ø 15.0 | 64   | ø 21.0 | F15/580    | 120E  | TF15    | 40.003  |
|              | ML18S,ML18H,ML20D          | 6920    | 3920    | ø 25.0 | 77   | ø 35.0 | F25/64     | 145E  | TF25    | 40.005  |
|              | ML26S,ML26H                | 6725    | 3725    | ø 30.0 | 80   | ø 42.0 | F30/63     | 157E  |         | 40.006  |
|              | ML26D                      | 1225    | 2225    | ø 32.0 | 75   | ø 45.0 | F32/221    | 161E  |         | 231.005 |
|              | ML36                       | 1236    | 2236    | ø 42.0 | 94   | ø 55.0 | F42/99     | 171E  |         | 231.007 |
| HARDINGE     | S20,ST220                  | 6920    | 3920    | ø 25.0 | 77   | ø 35.0 | F25/64     | 145E  | TF25    | 40.005  |
|              | ST225                      | 6725    | 3725    | ø 30.0 | 80   | ø 42.0 | F30/63     | 157E  | TF30    | 40.006  |
| DMG          | GMC 20                     | 6320    | 3320    | ø 25.0 | 77   | ø 35.0 |            |       |         |         |





**Enituice**  
ENTERPRISE CO., LTD.

## GUIDE BUSHES FOR LATHES



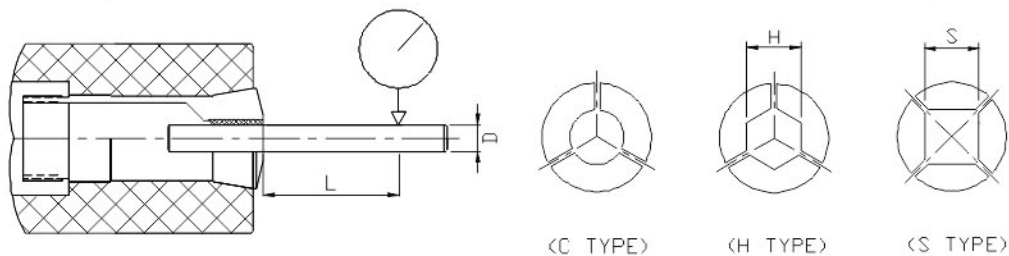
| Machines | Type                        | Item No | d      | L    | D      | Thread M | Article No |         |        |
|----------|-----------------------------|---------|--------|------|--------|----------|------------|---------|--------|
| CITIZEN  | R04                         | 5204    | ø 9.0  | 38.5 | ø 12.5 | M8X0.75  |            | 263.001 |        |
|          | R07                         | 5907    | ø 11.0 | 52   | ø 14.5 | M10X0.75 | 3134E      | 3.001   | TD-7   |
|          | D10,E10,F10,L10             | 5910    | ø 16.0 | 59   | ø 20.5 | M14X1.0  | 3260E      | 8.001   | TD10   |
|          | B12, F12,C12,A12            | 5212    | ø 18.0 | 60   | ø 22.0 | M18X1.0  | 3319E      | 174.001 | SD125R |
|          | B20, M20, L20               | 5920    | ø 28.0 | 82   | ø 34.0 | M25X1.0  | 3602E      | 22.001  | TD25S  |
|          | L16/20,F20,E20,WF6,206M,A20 | 5216    | ø 30.0 | 59   | ø 35.0 | M30X1.0  |            | 510.001 |        |
|          | F25, L25, E25, E25J         | 5725    | ø 34.0 | 87.5 | ø 41.0 | M34X1.0  | 3733E      | 451.001 | CD25   |
|          | L32,M32,G32,E32             | 5232    | ø 42.0 | 82   | ø 48.0 | M40X1.0  |            | 28.01   | TD32   |
| STAR     | TD-7                        | 5907    | ø 11.0 | 52   | ø 14.5 | M10X0.75 | 3134E      | 3.001   | TD-7   |
|          | JNC-10,RNC-10,SNC-10        | 5910    | ø 16.0 | 59   | ø 20.5 | M14X1.0  | 3260E      | 8.001   | TD10   |
|          | SE12, VNC12, SJ15,SNC15     | 5512    | ø 21.0 | 58   | ø 24.0 | M18X1.0  | 3438E      | 450.001 | SNC15  |
|          | SB16, SR16                  | 5616    | ø 22.0 | 70.5 | ø 26.0 | M20X1.0  |            | 487.001 | P1653D |
|          | RNC16,SE16,SA16,VNC16,KNC16 | 5516    | ø 22.0 | 68   | ø 29.0 | M22X1.0  |            |         |        |
|          | SA-16, SR-16                | 5916    | ø 22.0 | 68   | ø 29.0 | M22X1.0  | 3455E      | 39.001  | TD20R  |
|          | SR20,KNC16, VNC20           | 5920    | ø 28.0 | 82   | ø 34.0 | M25X1.0  | 3602E      | 22.001  | TD25S  |
|          | JNC16,J20,ZNC16,VNC20       | 5216    | ø 30.0 | 59   | ø 35.0 | M30X1.0  |            | 510.001 |        |
|          | SCN-25,KJR-25               | 5725    | ø 34.0 | 87.5 | ø 41.0 | M34X1.0  | 3733E      | 451.001 | CD25   |
|          | JNC32/25,VNC32/25,MR32,SR32 | 5532    | ø 42.0 | 82   | ø 49.0 | M40X1.0  | 3827E      | 28.001  | TD32S  |
|          | STM-38                      | 5538    | ø 48.0 | 82   | ø 59.0 | M46X1.0  |            | 464.001 |        |
| TSUGAMI  | NP-4W                       | 5907    | ø 11.0 | 52   | ø 14.5 | M10X0.75 | 3134E      | 3.001   | TD-7   |
|          | T7, BOO7, BM07              | 5707    | ø 12.0 | 52   | ø 15.8 | M12X1.0  | 3149E      | 261.001 |        |
|          | L10                         | 5710    | ø 15.0 | 54   | ø 19.0 | M14X1.0  |            |         |        |
|          | NT-11,NP-11                 | 5212    | ø 18.0 | 60   | ø 22.0 | M18X1.0  | 3319E      | 174.001 | SD125R |
|          | BO12                        | 5616    | ø 22.0 | 70.5 | ø 26.0 | M20X1.0  |            | 487.001 | P1653D |
|          | NP-17, NP-16, NT-17         | 5717    | ø 23.0 | 72   | ø 28.0 | M22X1.0  |            | 483.001 | TSG20R |
|          | NP-20,BS20,BO18,BO205       | 5720    | ø 30.0 | 70   | ø 36.0 | M28X1.0  |            | 486.001 | NN20KD |
|          | BO20-CV                     | 5721    | ø 26.0 | 77   | ø 29.0 | M25X1.0  |            |         | TD26   |
|          | BA-26                       | 5726    | ø 33.0 | 70   | ø 38.0 | M30X1.0  |            |         |        |
|          | BA-26L                      | 5724    | ø 32.0 | 70   | ø 38.0 | M30X1.0  |            |         |        |
|          | S-25,BS-26                  | 5725    | ø 34.0 | 87.5 | ø 41.0 | M34X1.0  | 3733E      | 451.001 | CD25   |
|          | NP-32                       | 5532    | ø 42.0 | 82   | ø 49.0 | M40X1.0  | 3827E      | 28.001  | TD32S  |
|          | BH38                        | 5738    | ø 48.0 | 81   | ø 54.0 | M46X1.0  |            |         |        |
| NOMURA   | NS-P8410, NS-P8420          | 5608    | ø 14.0 | 60.5 | ø 20.0 | M14X1.0  |            | 480.001 | P853D  |
|          | NS-P1053,NN-10K,            | 5610    | ø 16.0 | 63   | ø 20.0 | M14X1.0  |            | 481.001 | P1053D |
|          | NS-P1653,NS-P1253           | 5616    | ø 22.0 | 70.5 | ø 26.0 | M20X1.0  |            | 487.001 | P1653D |
|          | NN-P20,NN-20KF              | 5620    | ø 30.0 | 67.5 | ø 35.0 | M30X1.0  |            |         |        |
|          | NNC-P2553, NN-25K           | 5625    | ø 36.0 | 89   | ø 44.0 | M36X1.0  |            |         |        |
|          | P-32                        | 5632    | ø 44.0 | 90   | ø 50.0 | M40X1.0  |            |         |        |

| Machines    | Type                      | Item No | d      | L    | D      | Thread M  | Article No |         |          |
|-------------|---------------------------|---------|--------|------|--------|-----------|------------|---------|----------|
| TORNOS      | M 4,T4,TV                 | 5904    | ø 9.0  | 44   | ø 12.0 | M 8X0.75  | 3077E      | 1.001   | PD-4     |
|             | M 7                       | 5907    | ø 11.0 | 52   | ø 14.5 | M 10X0.75 | 3134E      | 3.001   | TD-7     |
|             | M 7,MS7                   | 5908    | ø 13.0 | 68   | ø 17.0 | M 13X1.0  |            | 45.001  |          |
|             | R10, M 10,R125,MS7        | 5910    | ø 16.0 | 59   | ø 20.5 | M 14X1.0  | 3260E      | 8.001   | TD10     |
|             | R10, M 10,R125            | 5212    | ø 18.0 | 60   | ø 22.0 | M 18X1.0  | 3319E      | 174.001 | SD125R   |
|             | M 15,R16,RR20             | 5915    | ø 22.0 | 68   | ø 29.0 | M 19X1.0  | 3454E      | 13.001  | TD20     |
|             | M 15,R16,RR20             | 5916    | ø 22.0 | 68   | ø 29.0 | M 22X1.0  | 3455E      | 39.001  | TD20R    |
|             | RR20,                     | 5920    | ø 28.0 | 82   | ø 34.0 | M 25X1.0  | 3602E      | 22.001  | TD25S    |
|             | M 20,M 25                 | 5925    | ø 32.0 | 70.5 | ø 40.0 | M 32X1.0  | 3708E      | 282.001 | TSD20    |
|             | MR32                      | 5932    | ø 44.0 | 87.5 | ø 53.0 | M 40X1.0  | 3835E      | 27.001  |          |
| TORNOS-DECO | DECO 2000-7               | 5907    | ø 11.0 | 52   | ø 14.5 | M 10X0.75 | 3134E      | 3.001   | TD-7     |
|             | DECO 2000-10              | 5910    | ø 16.0 | 59   | ø 20.5 | M 14X1.0  | 3260E      | 8.001   | TD10     |
|             | DECO 2000-13/16           | 5816    | ø 24.0 | 61   | ø 29.5 | M 24X1.0  | 3507E      | 61.002  | O201     |
|             | DELTA 12/20               | 5721    | ø 26.0 | 77   | ø 29.0 | M 25X1.0  |            | 99.001  | TD26     |
|             | DECO 2000-20              | 5820    | ø 28.0 | 82   | ø 38.0 | M 25X1.0  | 3610E      | 18.001  | TD25/167 |
|             | DECO 2000-26              | 5725    | ø 34.0 | 87.5 | ø 41.0 | M 34X1.0  | 3733E      | 451.001 | CD25     |
|             | DECO 2000-32              | 5532    | ø 42.0 | 82   | ø 49.0 | M 40X1.0  | 3827E      | 28.001  | TD32S    |
|             | DELTA 38/5                | 5738    | ø 48.0 | 81   | ø 54.0 | M 46X1.0  |            | 496.001 |          |
| BECHLER     | A4, A7                    | 5904    | ø 9.0  | 44   | ø 12.0 | M 8X0.75  | 3077E      | 1.001   | PD-4     |
|             | A7, A10                   | 5107    | ø 12.0 | 52   | ø 15.0 | M 12X1.0  | 3149E      | 261.001 |          |
|             | A7, A10, AR10             | 5915    | ø 22.0 | 68   | ø 29.0 | M 19X1.0  | 3454E      | 13.001  | TD20     |
|             | B12, B16, B20             | 5820    | ø 28.0 | 82   | ø 38.0 | M 25X1.0  | 3610E      | 18.001  | TD25/167 |
| BECHLER ENC | 74/75                     | 5910    | ø 16.0 | 59   | ø 20.5 | M 14X1.0  | 3260E      | 8.001   | TD10     |
|             | 162/164                   | 5816    | ø 24.0 | 61   | ø 29.5 | M 24X1.0  | 3507E      | 61.002  | O201     |
|             | 163/167                   | 5820    | ø 28.0 | 82   | ø 38.0 | M 25X1.0  | 3610E      | 18.001  | TD25/167 |
| STROHM      | M 75/105                  | 5907    | ø 11.0 | 52   | ø 14.5 | M 10X0.75 | 3134E      | 3.001   | TD-7     |
|             | M 105/125                 | 5312    | ø 18.0 | 60   | ø 22.0 | M 16X1.0  | 3320E      | 166.001 | SD125R16 |
|             | M 205/255                 | 5915    | ø 22.0 | 68   | ø 29.0 | M 19X1.0  | 3454E      | 13.001  | TD20     |
| TRAUB       | TNL 12/7                  | 5312    | ø 18.0 | 60   | ø 22.0 | M 16X1.0  | 3320E      | 166.001 | SD125R16 |
|             | TNL 16                    | 5916    | ø 22.0 | 68   | ø 29.0 | M 22X1.0  | 3455E      | 39.001  | TD20R    |
|             | TNL 17                    | 5920    | ø 28.0 | 82   | ø 34.0 | M 25X1.0  | 3602E      | 22.001  | TD25S    |
|             | TNL 20                    | 5820    | ø 28.0 | 82   | ø 38.0 | M 25X1.0  | 3610E      | 18.001  | TD25/167 |
|             | TNL 26                    | 5725    | ø 34.0 | 87.5 | ø 41.0 | M 34X1.0  | 3733E      | 451.001 | CD25     |
| WANG TZYU   | SL-1693                   | 5616    | ø 22.0 | 70.5 | ø 26.0 | M 20X1.0  |            | 487.001 | P1653D   |
|             | SL-2596                   | 5725    | ø 34.0 | 87.5 | ø 41.0 | M 34X1.0  | 3733E      | 451.001 | CD25     |
|             | SL-3295                   | 5232    | ø 42.0 | 82   | ø 48.0 | M 40X1.0  |            | 28.01   | TD32     |
| POLYGYM     | DIAMOND 12,12CS           | 5212    | ø 18.0 | 60   | ø 22.0 | M 18X1.0  | 3319E      | 174.001 | SD125R   |
|             | DIAMOND 16,16CS           | 5616    | ø 22.0 | 70.5 | ø 26.0 | M 20X1.0  |            | 487.001 | P1653D   |
|             | DIAMOND 20,20B,20CS,20CSB | 5216    | ø 30.0 | 59   | ø 35.0 | M 30X1.0  |            | 510.001 |          |
|             | DIAMOND 25,25B,25CS,25CSB | 5725    | ø 34.0 | 87.5 | ø 41.0 | M 34X1.0  | 3733E      | 451.001 | CD25     |
|             | DIAMOND 32,32B,32CS,32CSB | 5232    | ø 42.0 | 82   | ø 48.0 | M 40X1.0  |            | 28.01   | TD32     |
|             | DIAMOND SY-42             | 5542    | ø 50.0 | 82   | ø 56.5 | M 49X1.0  |            |         |          |
| JINN FA     | JSL-20                    | 5720    | ø 30.0 | 70   | ø 36.0 | M 28X1.0  |            | 486.001 | NN20KD   |
|             | JSL-26                    | 5725    | ø 34.0 | 87.5 | ø 41.0 | M 34X1.0  | 3733E      | 451.001 | CD25     |
|             | JSL-32                    | 5532    | ø 42.0 | 82   | ø 49.0 | M 40X1.0  | 3827E      | 28.001  | TD32S    |
|             | JSL-42AB                  | 5742    | ø 52.0 | 95   | ø 59.0 | M 50X1.0  |            |         |          |
| HANWHA      | HANEX11, SL12             | 5212    | ø 18.0 | 60   | ø 22.0 | M 18X1.0  | 3319E      | 174.001 | SD125R   |
|             | HANEX17, M L18-G          | 5916    | ø 22.0 | 68   | ø 29.0 | M 22X1.0  | 3455E      | 39.001  | TD20R    |
|             | HANEX20                   | 5920    | ø 28.0 | 82   | ø 34.0 | M 25X1.0  | 3602E      | 22.001  | TD25S    |
|             | HANEX25                   | 5725    | ø 34.0 | 87.5 | ø 41.0 | M 34X1.0  | 3733E      | 451.001 | CD25     |
|             | SL-32                     | 5532    | ø 42.0 | 82   | ø 49.0 | M 40X1.0  | 3827E      | 28.001  | TD32S    |
|             | SL-35,SL-38               | 5435    | ø 45.0 | 82   | ø 52.0 | M 42X1.0  |            |         |          |
|             | SL-38HP-II                | 5438    | ø 46.0 | 82   | ø 53.0 | M 45X1.0  |            |         |          |

| Machines     | Type                         | Item No | d      | L    | D      | Thread M  | Article No |         |          |
|--------------|------------------------------|---------|--------|------|--------|-----------|------------|---------|----------|
| NEXTURN      | SA-12                        | 5312    | ø 18.0 | 60   | ø 22.0 | M 16X1.0  | 3320E      | 166.001 | SD125R16 |
|              | SA-12                        | 5212    | ø 18.0 | 60   | ø 22.0 | M 18X1.0  | 3319E      | 174.001 | SD125R   |
|              | SA-18,SA-20,SA-20e           | 5920    | ø 28.0 | 82   | ø 34.0 | M 25X1.0  | 3602E      | 22.001  | TD25S    |
|              | SA-26,SA-26e                 | 5725    | ø 34.0 | 87.5 | ø 41.0 | M 34X1.0  | 3733E      | 451.001 | CD25     |
|              | SA-32                        | 5532    | ø 42.0 | 82   | ø 49.0 | M 40X1.0  | 3827E      | 28.001  | TD32S    |
| GAUTHIER     | 1hR                          | 5907    | ø 11.0 | 52   | ø 14.5 | M 10X0.75 | 3134E      | 3.001   | TD-7     |
|              | GM 12                        | 5910    | ø 16.0 | 59   | ø 20.5 | M 14X1.0  | 3260E      | 8.001   | TD10     |
|              | GM 20                        | 5915    | ø 22.0 | 68   | ø 29.0 | M 19X1.0  | 3454E      | 13.001  | TD20     |
| GILDEMEISTER | GLD 12                       | 5312    | ø 18.0 | 60   | ø 22.0 | M 16X1.0  | 3320E      | 166.001 | SD125R16 |
|              | GLD 16/20,G S20-L            | 5820    | ø 28.0 | 82   | ø 38.0 | M 25X1.0  | 3610E      | 18.001  | TD25/167 |
|              | GLD 25L,G S25-L              | 5725    | ø 34.0 | 87.5 | ø 41.0 | M 34X1.0  | 3733E      | 451.001 | CD25     |
|              | SPEED 32-10                  | 5532    | ø 42.0 | 82   | ø 49.0 | M 40X1.0  | 3827E      | 28.001  | TD32S    |
|              | SPRINT 42                    | 5142    | ø 48.0 | 81   | ø 56.0 | M 48X1.25 |            | 115.001 |          |
| PETERMANN    | P4,P7                        | 5904    | ø 9.0  | 44   | ø 12.0 | M 8X0.75  | 3077E      | 1.001   | PD-4     |
|              | P7R,10,10HS                  | 5910    | ø 16.0 | 59   | ø 20.5 | M 14X1.0  | 3260E      | 8.001   | TD10     |
|              | P16                          | 5816    | ø 24.0 | 61   | ø 29.5 | M 24X1.0  | 3507E      | 61.002  | O201     |
| MANURHIN     | Swing 13,Traminer 13         | 5312    | ø 18.0 | 60   | ø 22.0 | M 16X1.0  | 3320E      | 166.001 | SD125R16 |
|              | Twin 13,Decotum 16           | 5916    | ø 22.0 | 68   | ø 29.0 | M 22X1.0  | 3455E      | 39.001  | TD20R    |
|              | Traminer 16                  | 5915    | ø 22.0 | 68   | ø 29.0 | M 19X1.0  | 3454E      | 13.001  | TD20     |
|              | K M X,Swing,Traminer,Twin 20 | 5820    | ø 28.0 | 82   | ø 38.0 | M 25X1.0  | 3610E      | 18.001  | TD25/167 |
|              | K M X 26                     | 5725    | ø 34.0 | 87.5 | ø 41.0 | M 34X1.0  | 3733E      | 451.001 | CD25     |
|              | M irabel PM 32               | 5532    | ø 42.0 | 82   | ø 49.0 | M 40X1.0  | 3827E      | 28.001  | TD32S    |
| MAIER        | M L7                         | 5907    | ø 11.0 | 52   | ø 14.5 | M 10X0.75 | 3134E      | 3.001   | TD-7     |
|              | M L12G,M L12S,M L125K II     | 5312    | ø 18.0 | 60   | ø 22.0 | M 16X1.0  | 3320E      | 166.001 | SD125R16 |
|              | M L18S,M L18H,M L20D         | 5916    | ø 22.0 | 68   | ø 29.0 | M 22X1.0  | 3455E      | 39.001  | TD20R    |
|              | M L20                        | 5920    | ø 28.0 | 82   | ø 34.0 | M 25X1.0  | 3602E      | 22.001  | TD25S    |
|              | M L26S,M L26H,M L26D         | 5725    | ø 34.0 | 87.5 | ø 41.0 | M 34X1.0  | 3733E      | 451.001 | CD25     |
|              | M L32                        | 5532    | ø 42.0 | 82   | ø 49.0 | M 40X1.0  | 3827E      | 28.001  | TD32S    |
| HARDINGE     | S20,ST220                    | 5720    | ø 30.0 | 70   | ø 36.0 | M 28X1.0  |            | 486.001 | NN20KD   |
|              | ST220                        | 5920    | ø 28.0 | 82   | ø 34.0 | M 25X1.0  | 3602E      | 22.001  | TD25S    |
|              | ST25,ST225                   | 5725    | ø 34.0 | 87.5 | ø 41.0 | M 34X1.0  | 3733E      | 451.001 | CD25     |
| DMG          | GMC 20                       | 5820    | ø 28.0 | 82   | ø 38.0 | M 25X1.0  | 3610E      | 18.001  | TD25/167 |

## RUNNING CONCENTRICITY

This is similar to JIS Carbide Guide Bush and Collet Chuck



CIRCULAR TYPE

HEXAGON OR SQUARE TYPE

| circular diameter |       | testing point | running concentricity |           | H or S |       | testing point | running concentricity |           |
|-------------------|-------|---------------|-----------------------|-----------|--------|-------|---------------|-----------------------|-----------|
| D                 | over  | L             | standard              | high      | D      | over  | L             | standard              | high      |
|                   | up to |               | m/m                   | precision |        | up to |               | m/m                   | precision |
| 0.7               | 1     | 3             | 0.01                  | 0.006     | 1      | 3     | 10            | --                    | 0.03      |
| 1                 | 1.6   | 6             | 0.01                  | 0.005     | 3      | 6     | 16            | 0.07                  | 0.03      |
| 1.6               | 3     | 10            | 0.01                  | 0.005     | 6      | 10    | 25            | 0.1                   | 0.03      |
| 3                 | 6     | 16            | 0.01                  | 0.005     | 10     | 18    | 40            | 0.1                   | 0.03      |
| 6                 | 10    | 25            | 0.01                  | 0.005     | 18     | 24    | 50            | --                    | 0.03      |
| 10                | 18    | 40            | 0.015                 | 0.008     | 24     | 35    | 60            | --                    | 0.03      |
| 18                | 24    | 50            | 0.015                 | 0.008     |        |       |               |                       |           |
| 24                | 30    | 60            | --                    | 0.008     |        |       |               |                       |           |
| 30                | --    | 60            | --                    | --        |        |       |               |                       |           |



**Enituice**  
ENTERPRISE CO., LTD.



Enituice Enterprise Co., Ltd. is a professional manufacturer of Spring Collets, Headstock Collets and Guide Bushes. With our extensive manufacturing experience, technological expertise, superior research and development (R & D) skills, our collets and guide bushes can meet any and all industrial standards requirements. The high quality of our materials, specialized heat treatment process, high precision grinding machining and strict quality control have made our products highly sought after all over the world. The main principles of our company are "Honesty", "Professional" and "Quality". By following the main principals, we can supply precision products at competitive prices for your company. We welcome your inquiries and hope to be of service in the future.

#### Taiwan Factory

No.19, Ln. 54, Sec. 1, Minsheng N. Rd., Kuishan Dist., Taoyuan County 333, Taiwan

Tel: +886-3-3564957 (Rep.)

Fax: +886-3-3574795 / +886-3-3575519

E-mail: [eni.tuice@msa.hinet.net](mailto:eni.tuice@msa.hinet.net)

Skype: chenkuanghua

江太實業股份有限公司  
桃園市龜山區民生北路一段 54 巷 19 號